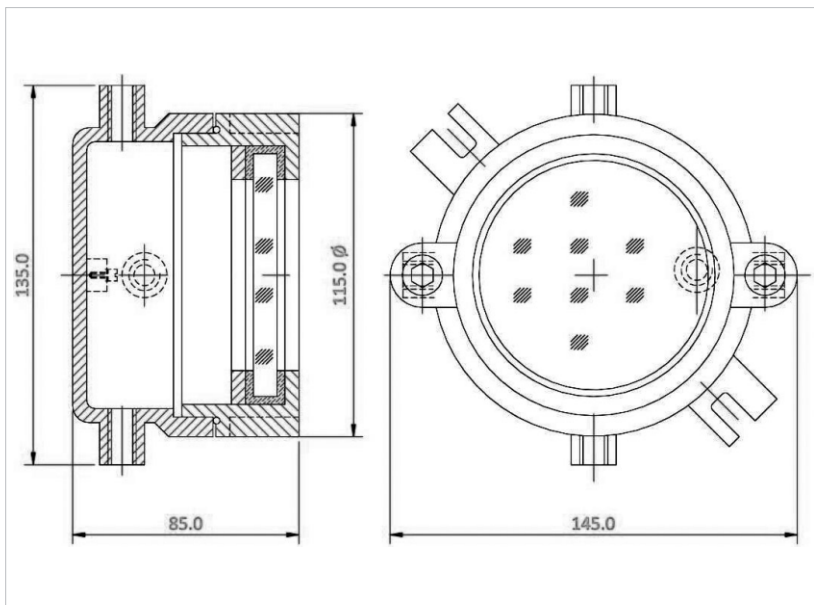


PATCO FLAME PROOF PRODUCTS

Manufacturer of : Flameproof / Weatherproof, Electrical Equipment, Lighting Fittings, LED Lighting Fittings, Instruments Enclosure & Cable Glands Tested Certified by CIMFR, Dhanbad

FLP / WP DIRECT ENTRY - INSTRUMENT ENCLOSURE



Catalogue No.	PFP/CS/10
Type of Ex-Protection	AS PER IS / IEC-60079-1:2007
Zone Classification	Zone 1 & Zone 2
Gas Group	Gas Group I, IIA, IIB
Ingress IP Protection	IP-65 IS / IEC60529-2001
Material of Contraction	Die Cast Aluminum Alloy LM6
Glass Window	1 No. 74 mm Diameter Glass Window
Paint	Epoxy Polyester Powder Coating
Earthling	Internal: 01 No. & External: 2 Nos.
Cable Entry	02 OR 04 Nos. for M20 (3/4" ET)
Hardware	Stainless Steel